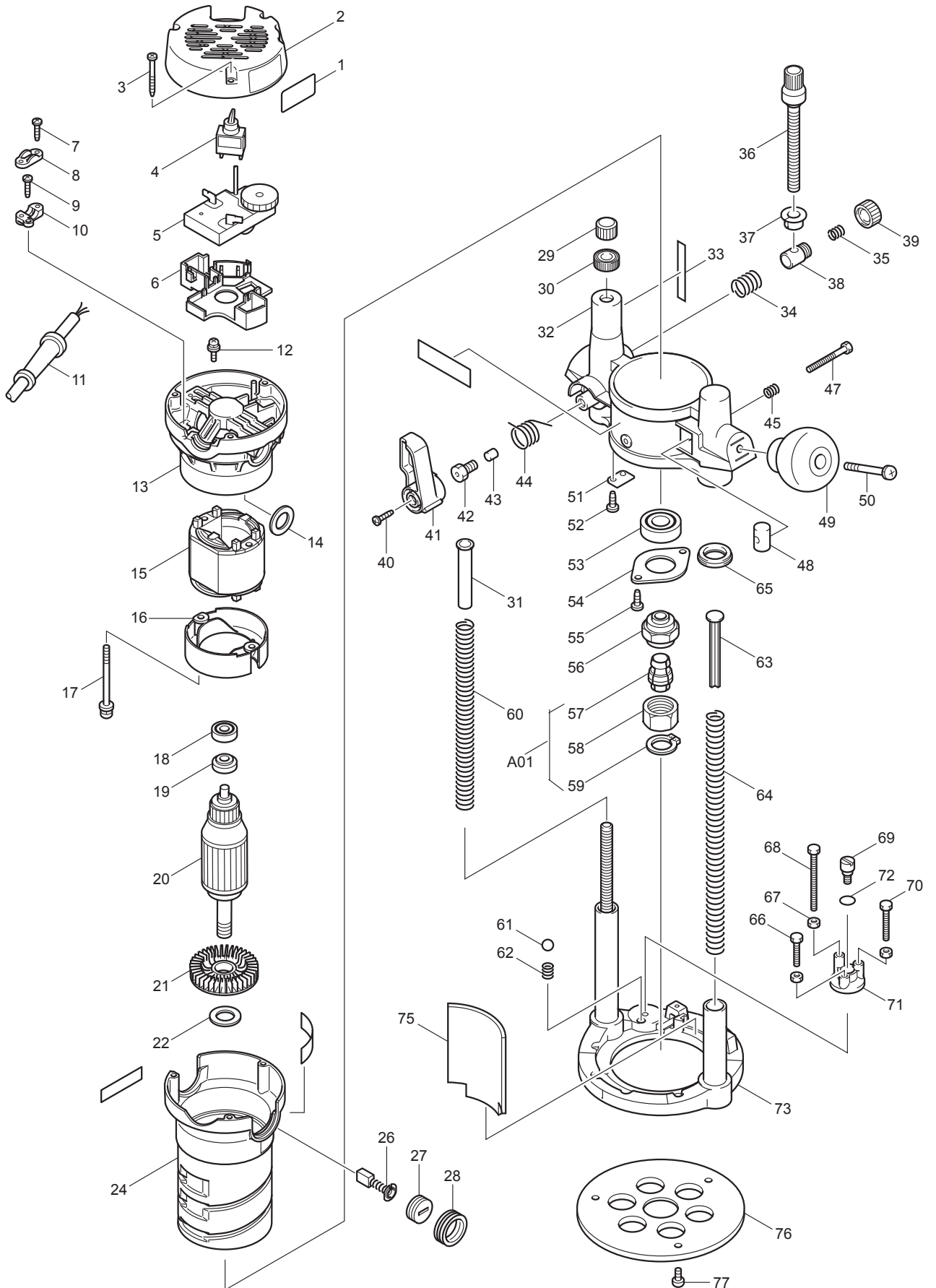




11 - 2010  
RP1101  
2-1/4" H.P. ROUTER V.S



Item No	Type	Ref	Part No	Description	Qty	Unit
001			812990-3	INDICATION LABEL	1	PC.
002			417140-1	REAR COVER	1	PC.
003			266203-8	TAPPING SCREW BIND CT 4X40	3	PC.
004			651423-1	SWITCH	1	PC.
005			631397-2	CONTROLLER	1	PC.
006			417143-5	CONTROLLER HOLDER	1	PC.
007	2		265A48-7	TAPPING SCREW 4X18	2	PC.
008			687052-4	STRAIN RELIEF	1	PC.
009			266034-5	TAPPING SCREW CT 4X16	1	PC.
010			687100-9	STRAIN RELIEF	1	PC.
011			565056-5	CORD W/PLUG 3P-16-2.5M, SJ	1	PC.
		INC.	654110-1	INSULATED RECEPTACLE	1	PC.
		INC.	654113-5	TERMINAL 34108	1	PC.
		INC.	654117-7	INSULATING TERMINAL	1	PC.
		INC.	682505-8	CORD GUARD 10-90	1	PC.
012			652014-1	PAN HEAD SCREW M4X8	1	PC.
013			151879-3	MOTOR REAR HOUSING COMPLETE	1	PC.
		INC.	643708-9	BRUSH HOLDER 5-11	2	PC.
014			681009-7	WASHER	2	PC.
015			594356-6	FIELD ASS'Y 115V	1	PC.
		INC.	654069-2	RECEPTACLE	1	PC.
		INC.	654020-2	RING TERMINAL	2	PC.
		INC.	654501-6	CONNECTOR P-1.25	2	PC.
016			417136-2	BAFFLE PLATE	1	PC.
017			911686-4	PAN HEAD SCREW M5X65	2	PC.
018			210005-4	BALL BEARING 608DDW	1	PC.
019			681650-6	INSULATION WASHER	1	PC.
020			518633-2	ARMATURE ASS'Y 115V (OLD# 516406-7 - N/L/A)	1	PC.
		INC.		Item. 18,19,21		
021			240031-9	FAN 60	1	PC.
022			253853-8	FLAT WASHER 15	1	PC.
023	2		804M94-3	CAUTION LABEL	1	PC.
024			317319-3	MOTOR HOUSING	1	PC.
025			853157-4	NAME PLATE PR1101	1	PC.
026	2		194996-6	CARBON BRUSH CB-303 2PC/SET (W/ ORIGIN)	1	SET
027			643750-0	BRUSH HOLDER CAP	2	PC.
028			681655-6	HOLDER RING	2	PC.
029			252643-6	WING NUT M10	1	PC.
030			410129-8	NYLON NUT M10	1	PC.
031			417320-9	SILENT POLE	1	PC.
032			183358-3	SLIDE BASE	1	PC.
		INC.		Item. 33		
033			816804-8	SCALE PLATE	1	PC.
034			231231-2	COMPRESSION SPRING 12	1	PC.
036			265749-1	SCREW 3/8-16UNC	1	PC.
037			417548-9	DEPTH POINTER	1	PC.
038			153475-3	HALF NUT COMPLETE	1	PC.
040			911118-1	PAN HEAD SCREW M4X12	1	PC.
041			417546-3	LEVER 55	1	PC.
042			266275-3	SET BOLT B8X16	1	PC.
043			323856-7	LOCK PIN	1	PC.
044			231651-0	TORSION SPRING 16	1	PC.

Item No	Type	Ref	Part No	Description	Qty	Unit
045			231456-8	COMPRESSION SPRING 7	1	PC.
047			911273-9	PAN HEAD SCREW M5X50	1	PC.
048			324105-5	LOCK NUT M5	1	PC.
049			271313-8	KNOB 55	2	PC.
050			911378-5	PAN HEAD SCREW M6X55	2	PC.
051			344217-8	GUIDE PLATE	1	PC.
052			266026-4	TAPPING SCREW BIND CT 4X12	2	PC.
053			211228-7	BALL BEARING 6202DDW	1	PC.
054			285689-7	BEARING RETAINER 55	1	PC.
055			266035-3	TAPPING SCREW BIND CT 5X12	2	PC.
056			763641-0	COLLET BODY	1	PC.
058			763642-8	COLLET NUT	1	PC.
059			961056-7	RETAINING RING S-16	1	PC.
060			233303-9	COMPRESSION SPRING 13	1	PC.
061			216009-4	STEEL BALL 7.1	1	PC.
062			231419-4	COMPRESSION SPRING 5	1	PC.
063			417252-0	POLE	1	PC.
064			233302-1	COMPRESSION SPRING 12	1	PC.
065			213323-9	DUST SEAL 20	2	PC.
066	2		265586-3	* +HEX. BOLT M5X14	1	PC.
068	1		265336-6	* + HEX. BOLT M5X40	1	PC.
	2		265587-1	* +HEX. BOLT M5X20	1	PC.
069			251467-7	- FLAT HEAD SCREW J6	1	PC.
070	2		265587-1	* +HEX. BOLT M5X20	1	PC.
071			315931-3	STOPPER	1	PC.
072			213030-4	O RING 8	1	PC.
073			152878-8	BASE COMPLETE	1	PC.
075			417547-1	CHIP DEFLECTOR	1	PC.
076			417138-8	BASE PLATE	1	PC.
077			265081-3	+ P.H.SCREW W3/16-24X10	3	PC.
078			813916-8	INDICATION LABEL	1	PC.
100			652008-6	P.H. SCREW M3.5X7	2	PC.
101			654037-5	INSULATED EYE TERMINAL FT1.25-M3	1	PC.
106			654198-1	INSULATED TERMINAL	1	PC.

### **ACCESSORIES**

**- See catalogue or visit [www.makita.ca](http://www.makita.ca) for more optional accessories -**

A01			193214-9	COLLET CONE 1/4" 6.35	1	PC.
			193215-7	COLLET CONE 1/2" 12.7	1	PC.
		INC.	763643-6	COLLET CONE 1/2" (Item 57) - N/A as individually	1	PC.
		INC.		Item No. 58-59		
A02			781031-5	WRENCH 27, BULK	2	PC.
A03	2		781034-9	WRENCH 8 - 24	1	PC.
A04			193073-1	STRAIGHT GUIDE	1	PC.
			193312-9	STRAIGHT GUIDE, W/MICRO ADJUSTMENT, STEEL	1	PC.
		INC.	193292-9	ROD 8 SET, 2PC/SET	1	SET
		INC.	193359-3	ROD 12 SET, 2PC/SET	1	SET
		INC.	193360-8	ROD 7 SET, 2PC/SET	1	SET
A05			193155-9	CLEAR BASE PLATE	1	PC.
A06			252627-4	NUT M30	1	PC.
A07			P-80009	DUST NOZZLE SET	1	PC.
A08			763805-6	COLLET SLEEVE 3/8"	1	PC.
A09			-----	DOVETAIL ROUTER BITS		

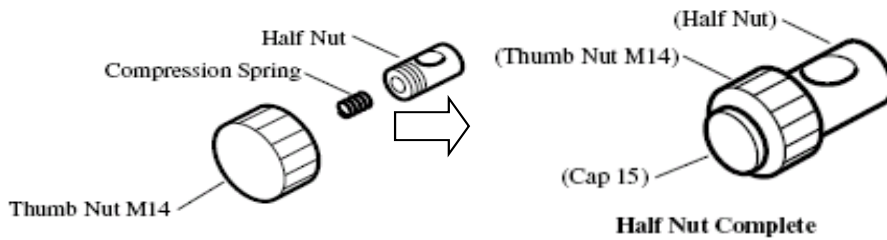
Item No	Type	Ref	Part No	Description	Qty	Unit
A10			193457-3	PLUNGE ROUTER BASE SET - See Parts Breakdown 193457-3	1	PC.
		INC.		Item No. 29-38, 40-52, 60-73, 75-77, A03		
	Opt.		193103-8	ROUTER BASE SET - See Parts Breakdown 193103-8	1	PC.
	Opt.		193104-6	D-HANDLE BASE SET - See Parts breakdown 193104-6	1	PC.
A12			193366-6	TEMPLER GUIDE 5/8" Use F/KJ150	1	PC.

**SERVICE CHANGES**

**1. Changes on Half Nut, Compression Spring, etc. (TI#66483)**

Item No.	Description	Type 1	Type 2
38	Half Nut	324104-7	153475-3
35	Compression Spring	231419-4	-----
39	Thumb Nut M14	252644-4	-----

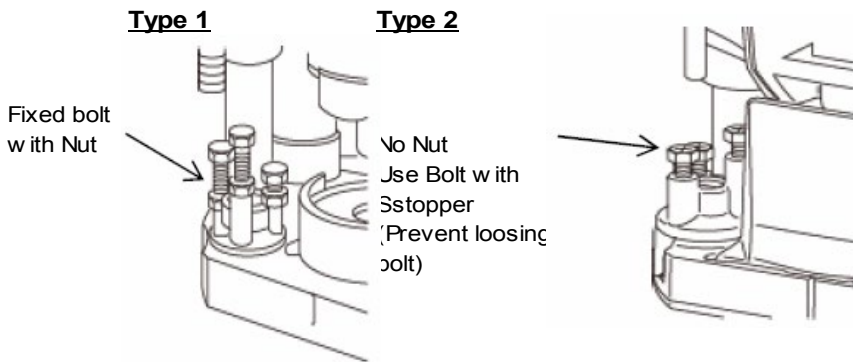
Above parts are completely interchangeable as a set. (TI#66483)



**2. Changes on Hex. Bolt (T#IA4136)**

Item No.	Description	Type 1	Type 2
66	+ Hex. Bolt M5X16 >M5X14	265333-2	265586-3
67	Hex. Nut M5	931202-6	-----
68	+ Hex. Bolt M5X40 > M5X20	265336-6	265587-1
70	+ Hex. Bolt M5X28 > M5X20	265335-8	265587-1

Above parts are completely interchangeable as a set.

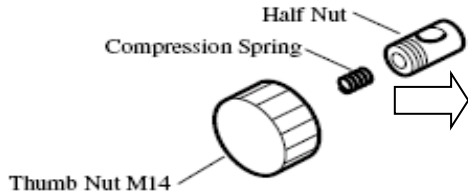


**SERVICE CHANGES**

**1. Changes on Halt Nut, Compression Spring, etc. (TI#66483)**

Item No.	Description	Type 1	Type 2
38	Halt Nut	324104-7	153475-3
35	Compression Spring 5	231419-4	-----
39	Thumb Nut M14	252644-4	-----

Above parts are completely interchangeable as a set. (TI#66483)



**2. Changes on Hex. Bolt (T#IA4136)**

Item No.	Description	Type 1	Type 2
66	+ Hex. Bolt M5X16 >M5X14	265333-2	265586-3
67	Hex. Nut M5	931202-6	-----
68	+ Hex. Bolt M5X40 > M5X20	265336-6	265587-1
70	+ Hex. Bolt M5X28 > M5X20	265335-8	265587-1

Above parts are completely interchangeable as a set.

**Type 1**

**Type 2**

Fixed bolt with Nut

No Nut  
Use Bolt with Sstopper (Prevent loosing bolt)